



 **GRANADA PARK**

**PLUMERIA**  
3830 POMEGRANATE PLACE | LOT 17





 **GRANADA PARK**

**PLUMERIA**  
with Optional Outdoor Great Room  
3830 POMEGRANATE PLACE | LOT 17



Shown with optional fireplace and entertainment built-ins.



# GRANADA PARK

## PLUMERIA

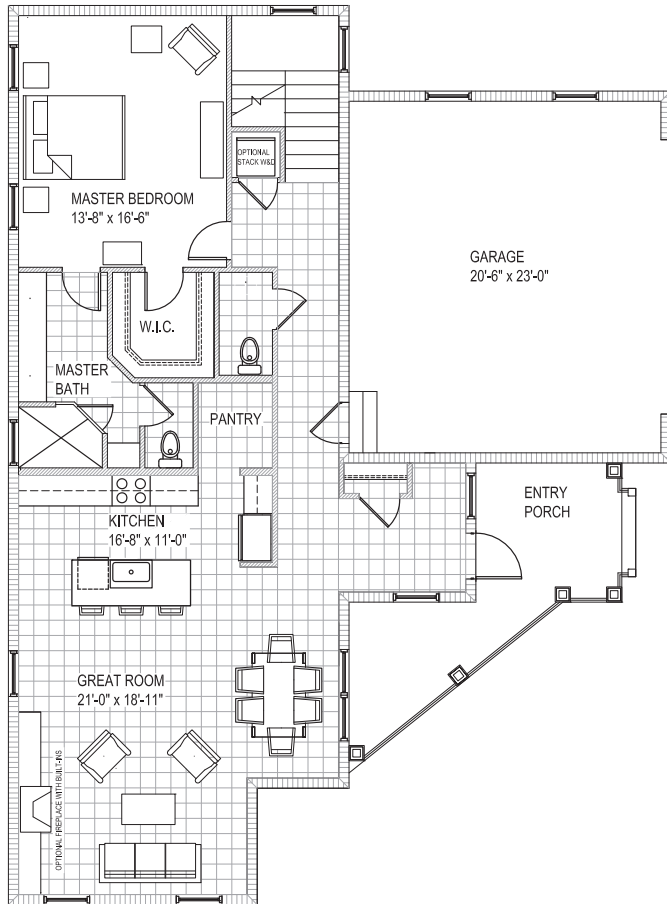
3830 POMEGRANATE PLACE

LOT 17

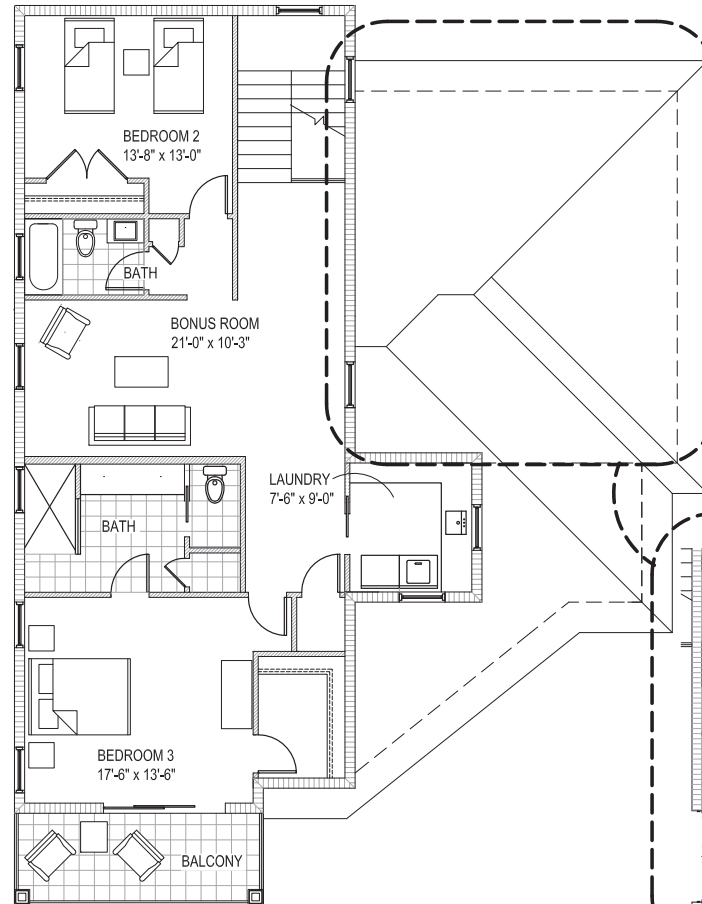
3 BR + Bonus Room | 3.5 BA

Living Area	2,613 sq. ft.
Porch & Balconies	273 sq. ft.
Garage	510 sq. ft.

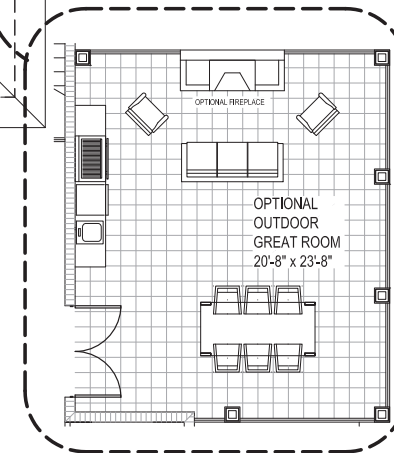
TOTAL	3,396 sq. ft.
Outdoor Great Room	+ 510 sq. ft.



GROUND FLOOR PLAN



SECOND FLOOR PLAN



OPTIONAL OUTDOOR GREAT ROOM

Prices, plans and features subject to change without notice. Square footage and dimensions are estimated and may vary in actual construction. Floor plans and renderings are artist's conception and not intended to show specific detailing. All designs are the property of MyGreeBuildings. Lic #CGC1510640.

+1 941 356 8428  
[peterglaughlin.com/granada](http://peterglaughlin.com/granada)

Peter G. Laughlin  
 GROUP

Premier

Sotheby's  
 INTERNATIONAL REALTY

MGB  
 BUILT  
 Fine Custom Homes

Each office is independently owned and operated.