



 **GRANADA PARK**

JASMINE
3843 POMEGRANATE PLACE | LOT 22

Shown with optional fireplace, entertainment built-ins and elevator



GRANADA PARK

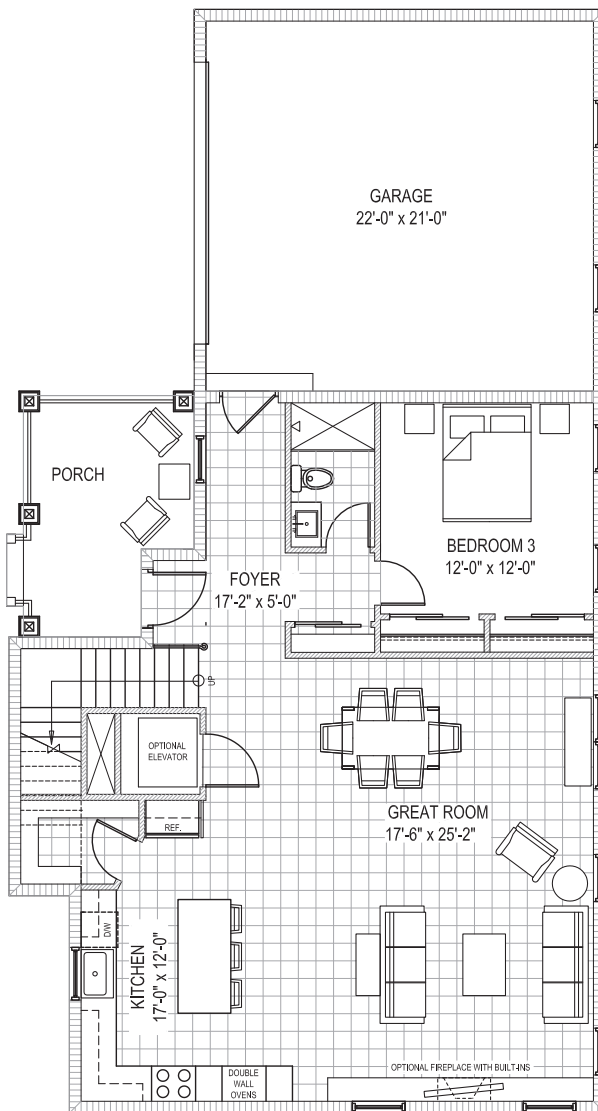
JASMINE

3843 POMEGRANATE PLACE

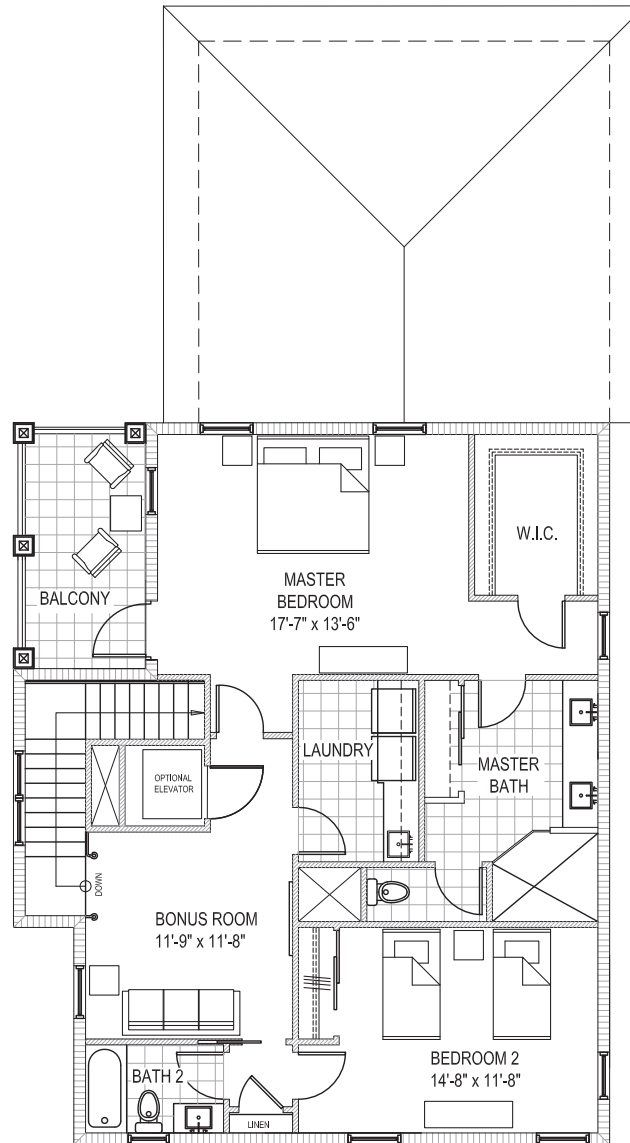
LOT 22

3 BR + Bonus Room | 3 BA

Living Area	2,453 sq. ft.
Porch & Balconies	222 sq. ft.
Garage	506 sq. ft.
TOTAL	3,181 sq. ft.



GROUND FLOOR PLAN



SECOND FLOOR PLAN

Prices, plans and features subject to change without notice. Square footage and dimensions are estimated and may vary in actual construction. Floor plans and renderings are artist's conception and not intended to show specific detailing. All designs are the property of MyGreeBuildings. Lic #CGC1510640.

+1 941 356 8428
 peterglaughlin.com/granada



Premier | Sotheby's
 INTERNATIONAL REALTY



Each office is independently owned and operated.