

# NOTES:

1. Subject to all easements and restrictions of record.
2. Improvements shown on, but not limited to, underground utilities, landscape features, etc., shown as located or graphically shown.
3. Date of most recent field survey 02/1/08
4. This property appears on FEMA Flood Map #121500009B dated 2/15/04 Zone C
5. This survey performed without benefit of Title Abstract.
6. Bearings based on the Southerly R/W line of Hawkins Court.
7. Bearing a bearing of N 90°00'00" E (assumed).
8. The survey is based on City of Sarasota Benchmark #118 with a published elevation of 12.51 NGVD 1929.
9. The assumed use of this land is classified in the Minimum Technical Standard (MTS) of FDOT as Commercial (C-2) with a maximum relative distance accuracy for this type of boundary survey of 1 in 10,000 feet. The accuracy obtained by measurement and calculation of a closed geometric figure was found to exceed this requirement.

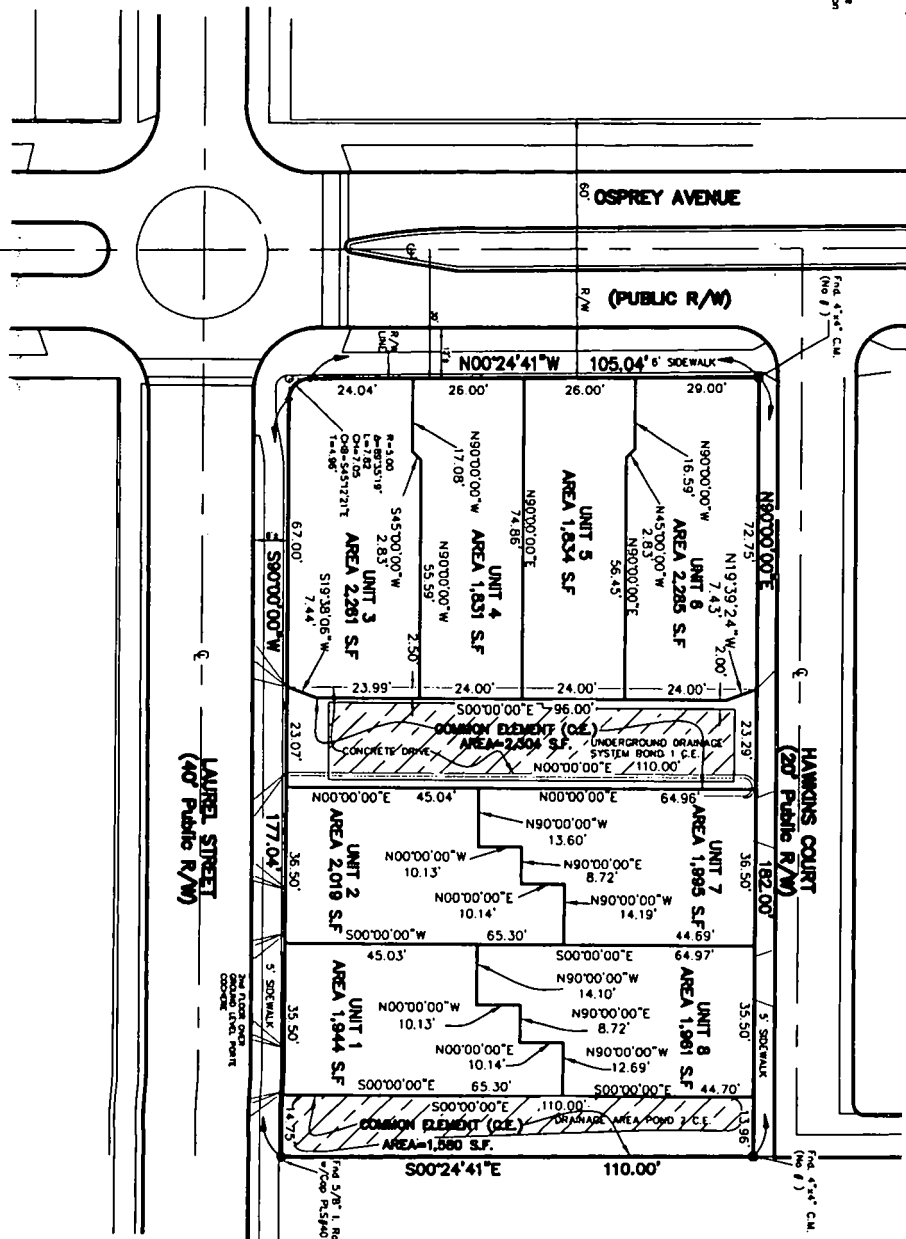
# LEGEND:

Found	Permanent Control Point
Pro-posed Distance	P.M.
Concrete Monument	Indicates Rod/Bearing
North	Chain Link Fence
South	Chain Link Fence
East	Eastman Block
West	Eastman Block
Pit Dimension	P.B./P.G. Pit Book/Proge
Structure	Structure
Right of Way	Right of Way
Edge of Pavement	Edge of Pavement
Dead Dimension	Dead Dimension
Open Space Dimension	Open Space Dimension
Common Element	Common Element
Limited Common Element	Limited Common Element
O	Indicates 5/8" I. Rod w/ Cop #3868 Set

## COTTAGE WALK CONDOMINIUM

IN SECTION 19, TOWNSHIP 36 SOUTH, RANGE 18E  
SARASOTA COUNTY, FLORIDA

CONDOMINIUM BOOK  
SHEET 2 OF 2  
EXHIBIT A



DATE PLAT PREPARED: 5/14/2008  
REVISED: 11/30/2009

WEBER ENGINEERING & SURVEYING, INC.  
4020 Beneva Road - Suite B, Sarasota, Florida 34233  
Telephone (941) 921-3914  
Surveying & Mapping Business Authorization No. LB 4010  
Engineering Business Authorization No. EB 4010